

QTAKE workflow.

The ecosystem of QTAKE software and hardware tools developed for professional filmmakers opens the next chapter of hybrid on-set and remote collaboration for productions of any size and budget.

Get in touch with us at in2co.re/contact to discuss your requirements.

An eye-opening experience.

One app to rule them all.



MULTI VIEW

Up to 9 views with independent patch to live signal or playback.



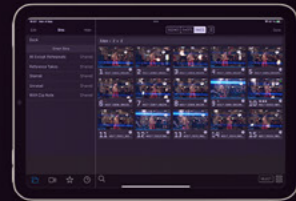
CLIP BROWSER

The most advanced clip finding experience in the film industry.



SPLIT VIEW

Efficient UI layout with playback and browser on the same screen.



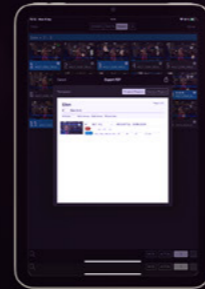
SMART BINS

Metadata-based filters used across the QTAKE ecosystem.



METADATA

The most elaborate metadata synced locally and over the cloud.



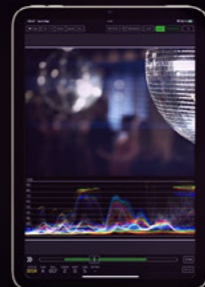
PDF REPORTS

Effortless PDF reporting at the fingertips of any crew member.



VIEW FX

Real-time image effects, including 3D LUTs and VR 360.



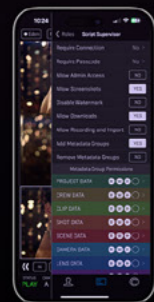
SCOPES

High quality waveform, histogram, vectorscope and more.



CAMERA UI

Dedicated camera interface with automatic and manual control.



SYNC ADMIN

Complete control over local or cloud project sharing.



STREAM UI

Cloud stream client invitations, settings and permissions.

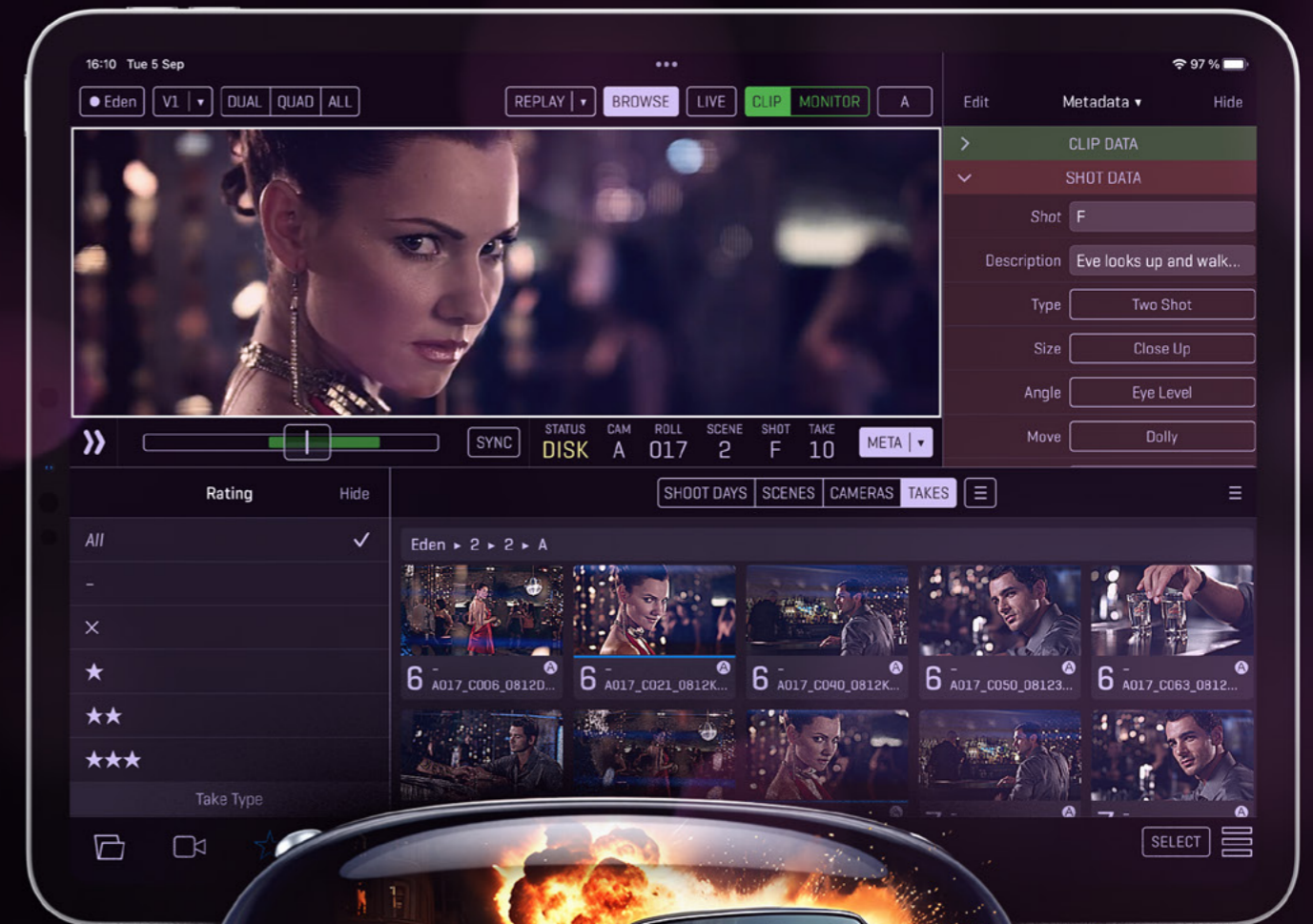


MULTI PLATFORM

Available on iPhone, iPad, Mac, Apple TV and Vision Pro.

Wouldn't it be great if there was a single tool that could display and record live signal, play back any take with custom ranges, edit clip metadata, perform real-time image processing, analyze picture with scopes, export reports, stream output and synchronize projects over the cloud?

Meet QTAKE Monitor, the app that does it all.
With studio-grade security.



LIVE 3D STREAMING TO APPLE VISION PRO

Groundbreaking live stereoscopic streaming to Apple Vision Pro with ultra-low latency and 4K resolution, either in conventional 3D cinema format or immersive 180-degree video.

Hybrid collaboration.

The director wants to compare the actions of the last take. DP wants to check focus on a different take. The client wants to see the best takes of the day. All at the same time! Impossible? Not with QTAKE.

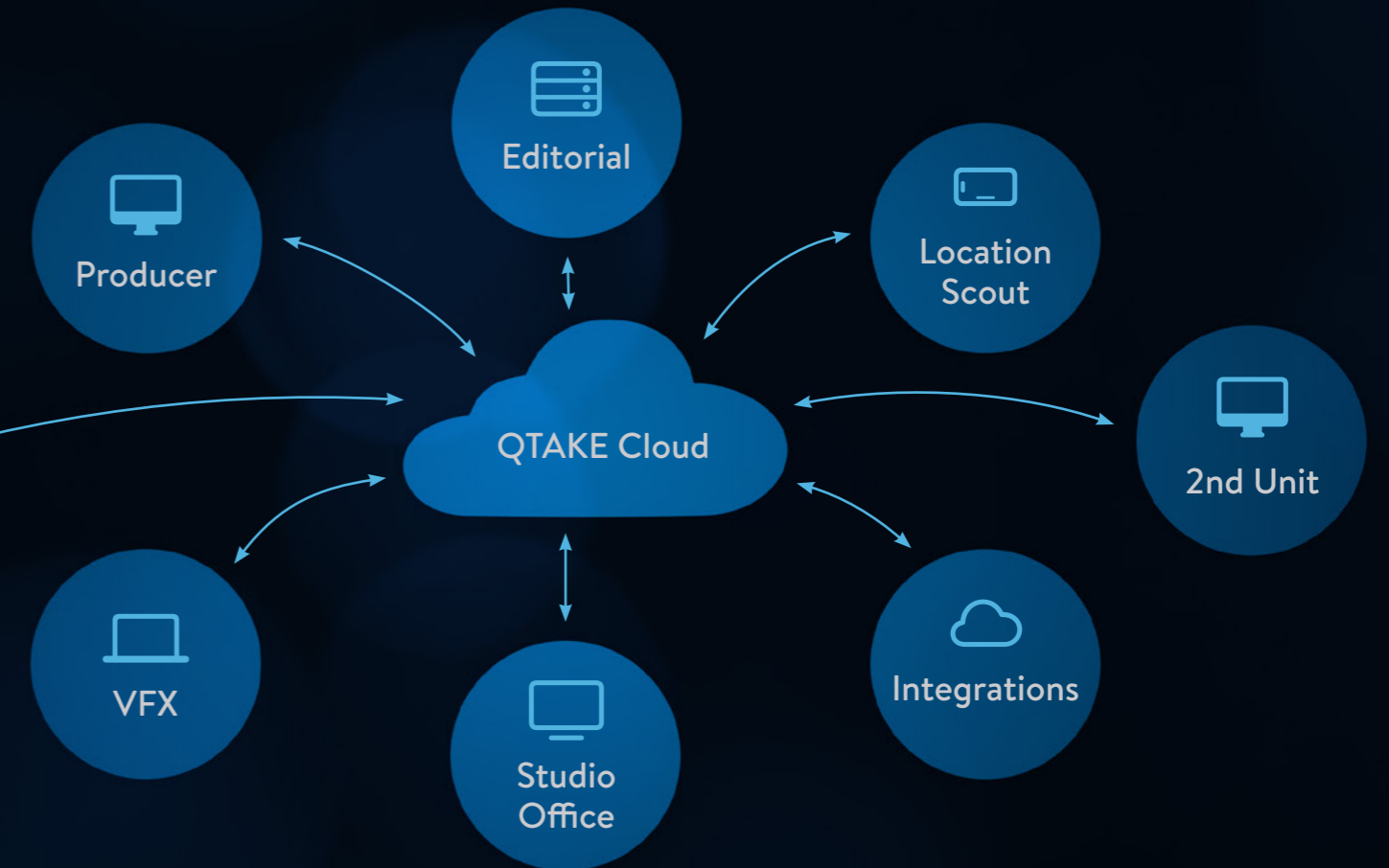
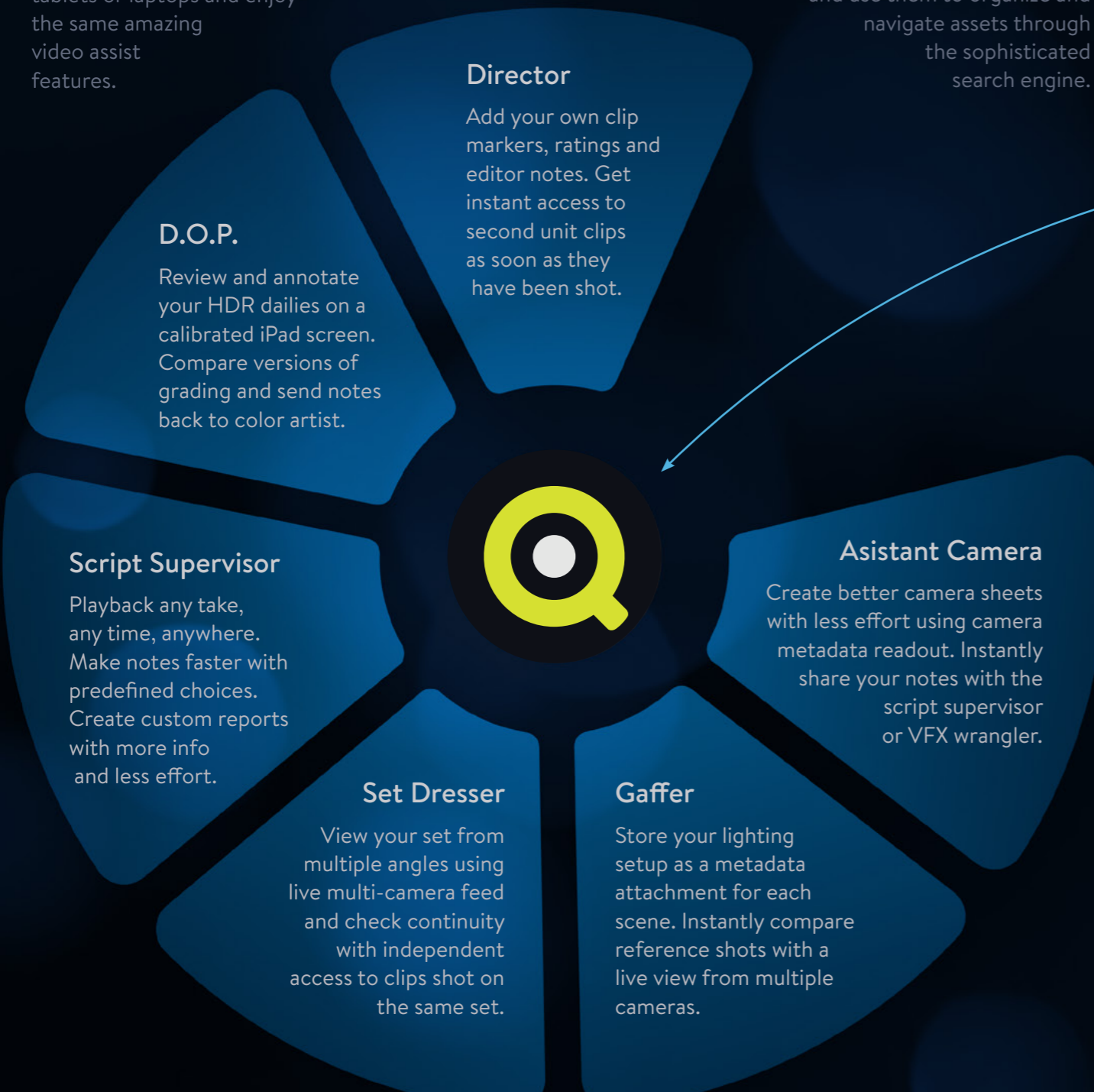
When shooting multiple units, QTAKE will synchronize the project across all connected nodes and provide the same set of features to local and remote users, for a seamless and secure collaboration.

INDEPENDENT PLAYBACK

Unlike traditional video assist, QTAKE provides decentralized playback for any authorized crew member with all the markers, notes and controls. Swap the SDI monitors for smartphones, tablets or laptops and enjoy the same amazing video assist features.

METADATA ACQUISITION

The core of QTAKE is the metadata system, which can be customized to fit any production. In addition to data collected from cameras and other devices, users can create their own groups and fields and use them to organize and navigate assets through the sophisticated search engine.



REALTIME COLLABORATION

Shoot multiple units as if they were one – all changes are synced in real time. This provides all connected and authorized nodes with the latest media and metadata. Updates are available whenever they are connected to the local network or cloud.

SECURITY IS KEY

The power to instantly share pre-release content comes with the responsibility to protect it. Major Hollywood studios have performed security assessments of the QTAKE ecosystem and approved its usage on big productions, where it provides the missing link between multiple units.

NO INTERNET? NO PROBLEM.

Unlike other dailies systems, QTAKE apps provide full functionality without an internet connection. When necessary, you can work offline and automatically synchronize as soon as the internet connection is available.

QTAKE ecosystem is equipped with the most complete security feature set ever found in a collaboration tool, such as user authentication with built-in TFA, SSO via SAML, end-to-end encryption, visible watermark, forensic watermark, or DRM-like screenshot protection.

Beyond video assist.

Over the 14 years of its existence, QTAKE has evolved from video assist system into indispensable filmmaking tool which is present on set of major blockbusters as well as small independent productions.

New QTAKE Pro version offers flexible licensing, single sign-on via SAML, instant playback, streaming to unlimited number of clients and the next level of performance with native Apple Silicon and Metal code.

ADVANCED VIDEO ASSIST

Every rehearsal, every take, every metadata change is recorded. All clips are tagged to allow instant navigation through months of shooting. Image processing is performed in real time and is fully interactive. Combined with multi-camera media access and collaborative metadata editing it gives filmmakers amazing control over the creative and technical process and bridges the gap between production and postproduction.

LIVE COLOR GRADING

Grade module provides sophisticated color grading effects that can be applied to live signal or playback. In addition to internal QTAKE processing, color correction can be dynamically uploaded to external LUT boxes, or exported as a 3D LUT to a 3rd party application. Moreover, QTAKE provides integration with Pomfort's Live Grade Pro for non-destructive live color grading.



VFX & CGI PREVIEW

From its beginning QTAKE was designed to provide real-time image processing, because there is no time for slow rendering on set. It starts with the high quality chroma key with despill control and garbage mattes and ends with live CGI graphics where virtual camera is controlled with motion control or motion tracking data coming to QTAKE live over the network.

FEATURES OVERVIEW

- Touchscreen UI • Up to 8x HD • Up to 4x 4K • Auto-record • SDI Metadata • Apple ProRes Certified
- Custom Clip Metadata • Off-speed Playback • Real-time Speed Ramps • Live Composite
- GPI Triggering • MoCo Support • Real-time CGI • Stereoscopy • Color Grading • LUT Box Support
- Realtime Scopes • Control Surface Support • RAW Image Processing • Integrated Editing • Live Cut
- Export to NLE • ALE Import & Export • Custom PDF Reports • Video Router Control
- On-set Streaming • Wi-Fi Talkback • Cloud Streaming • HDR • Dolby Vision®

QTAKE CLOUD

Unlike other media review and management systems, QTAKE doesn't require internet connection to provide seamless on-set collaboration via local QTAKE Server. But if the remote access is required, QTAKE Cloud can provide both live stream from set as well as fast and secure access to recorded assets. Additionally, automatic push to Pix, Moxion or ShotGrid systems is available.

RAW PROCESSING & PIPELINE

Pipeline is one of the most powerful tools in QTAKE, used to read media files, apply color grading, clip effects, overlays, scaling, and export them into multiple deliverables in a single process. By matching imported RAW media to existing video assist clips, all effects and metadata are preserved, making the dailies creation effortless and efficient.



PARTNERS



Devices for QTAKE.

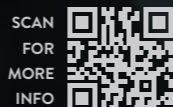
Dedicated hardware makes a difference.

ThunderFace 4K DUO

The ultimate output device for QTAKE Pro.

Video assist professionals require dedicated tools to provide the finest monitoring and playback experience. Meet the all-new ThunderFace 4K, an output device designed for QTAKE Pro and Apple Silicon.

ThunderFace converts the DisplayPort output of the computer directly to the SDI signal, without internal buffering. In this mode, SDI outputs are limited to the same frequency, but video output is delivered with the lowest possible delay.



ZERO-LATENCY PROCESSING



SINGLE-CABLE CONNECTION



2X UHD OR 8X HD SDI OUTPUTS



SDI METADATA SUPPORT



SILENT ACTIVE COOLING



FIRMWARE UPDATES

GPU OUTPUT

QTAKE uses direct output from the Graphics Processing Unit to deliver up to eight independent output channels with custom multi-view layouts in landscape or portrait mode, frame-precise metadata overlays, cropping to anamorphic aspect ratios, scopes, Dolby Vision® content mapping and more.



qod+

Superior hardware solution for legacy QTAKE systems.

Color grading, live compositing, raw image debayering and all other image processing is performed in real time, using the power of the graphics cards.

QTAKE Output Device was designed to provide low-latency processed output from the computer by converting GPU output to a single 4K or four 3G SDI feeds. If DisplayPort output doesn't provide sound, auxiliary input can be used to embed audio into SDI outputs.

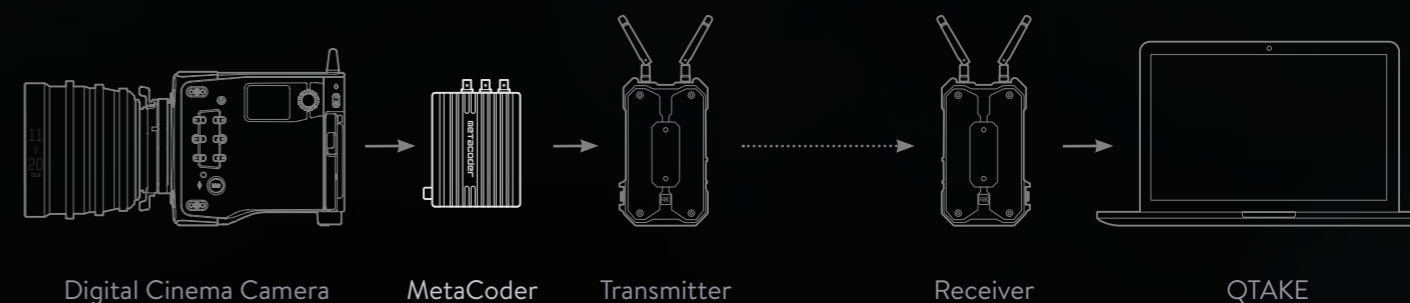


metacoder

Camera metadata transport for any SDI wireless transmitter.

Digital cinema cameras use ancillary space of the SDI signal to output timecode, record flag, filename and other valuable information. Unfortunately, wireless devices will not transport this part of the SDI signal.

Metacoder was designed to solve this problem and preserve valuable camera and lens metadata, by converting them to video or audio data.



Problem Solved.

Devices designed for specific industry needs.

ScreenPort SDI Pro

Unmatched camera-to-cloud workflow with metadata collaboration.

Shooting in a remote location often requires live stream or proxy media sharing to provide efficient control over the production process. ScreenPort SDI Pro delivers both and much more.

The heart of this device is an H.264 and HEVC encoder with incredible range of bitrates to satisfy both low-bandwidth wireless streaming as well as a high-quality video capture over the USB interface.

STANDALONE MODE

Using industry-standard power connectors and rugged metal enclosure, ScreenPort SDI Pro was designed to be mounted on the camera to capture video, audio and metadata from SDI output and stream it over the local network to multiple clients.

If there is no Wi-Fi available on the set, the ScreenPort device can be switched to Access Point mode to create its own wireless network.

HOST DEVICE MODE

When connected to an iOS device, ScreenPort SDI Pro provides ultra-low latency streaming over the internet and proxy media upload to QTAKE Cloud project to make the recorded content instantly available to remote collaborators.

Using camera SDI flags, the whole process of recording and cloud sharing can be automated and doesn't require extra person to handle operation.



SCREENPORT SDI+

Turn your iPad into professional SDI monitor and recorder.

iOS devices feature amazing displays that often exceed the quality of dedicated portable and on-board SDI monitors. In addition to color accuracy, wide gamut, and slim form factor, they offer responsive touchscreen interface and incredible computing power. But they lack video input.

ScreenPort SDI+ can capture up to 1080p60 signal and deliver it to iPad, iPhone or Mac via USB, Ethernet or Wi-Fi interface.



IMAGE ANALYSIS

Focus peaking, false color, waveform and more.



MULTI PLATFORM

Available also on Apple Vision Pro.



AUTO RECORD

Automatic recording based on SDI flag.



3D LUT LIBRARY

Custom 3D LUTs for instant color correction.





Credits

